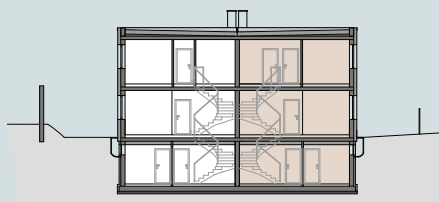
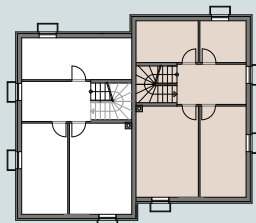


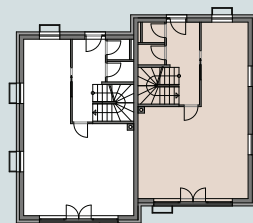
Hauptstraße 125 d-j, Pressbaum **npb 125_**



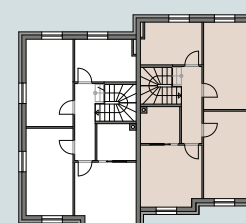
SCHNITT



UNTERGESCHOß



ERDGESCHOß



1. OBERGESCHOß

DH 4/2

WOHNFLÄCHE	117,05 m ²
TERRASSE	21,90 m ²
GARTEN	455,01 m ²
UNTERGESCHOß	61,33 m ²

cmk
IMMOBILIENBETEILIGUNG UND INVEST GMBH